

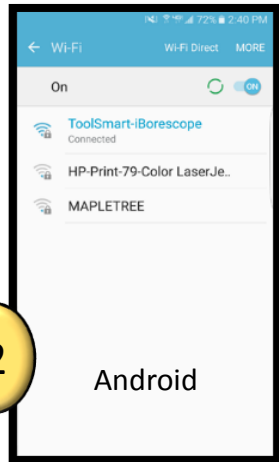
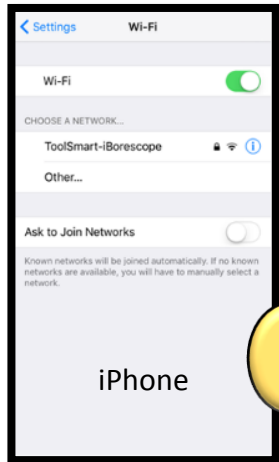


ToolSmart™ App Instruction Guide Video Inspection Camera

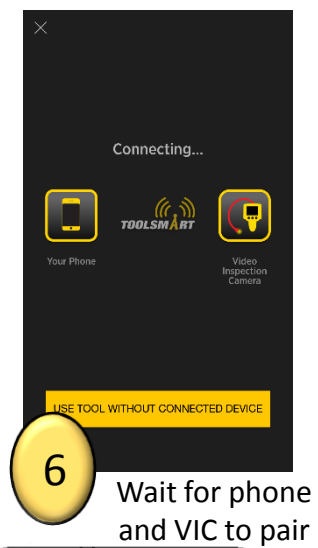
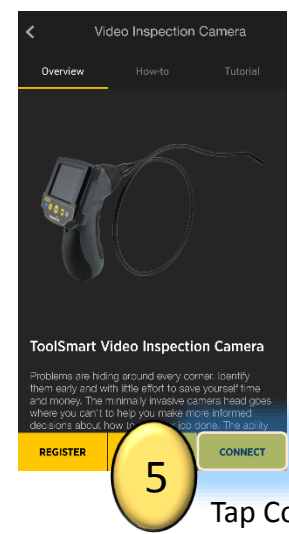
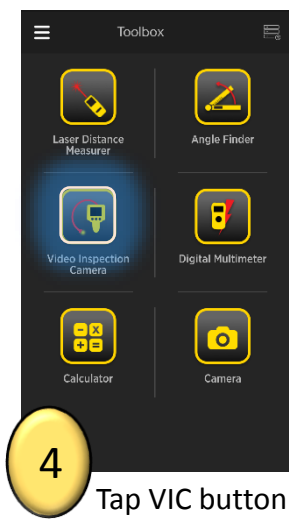
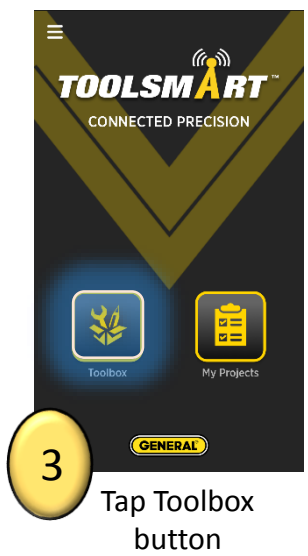
Video Inspection Camera Pairing



1 Press the gray On/Off button to turn on device. The screen will turn blue for a few seconds signaling that the WiFi is turned on.



Got to WiFi settings in the phone. Connect to "ToolSmart-iBorescope". Password: 12345



Video Inspection Camera



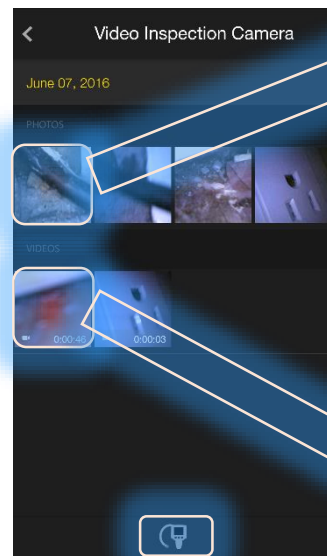
Hit the Video button to start/stop recording video



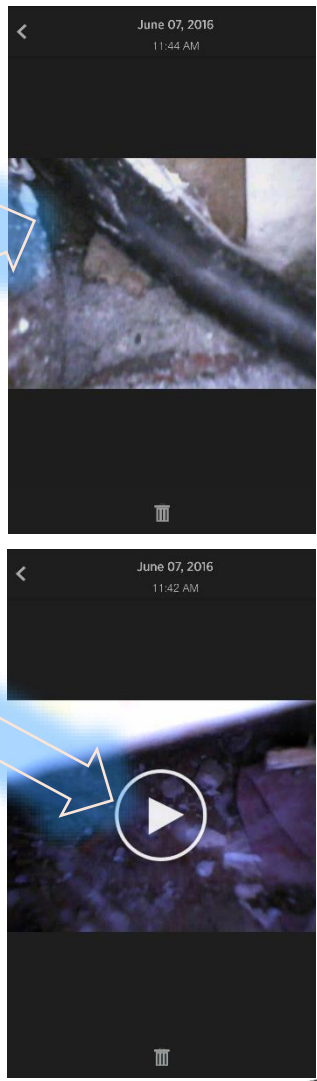
Hit the Picture button to capture snapshots



Tap the Gallery



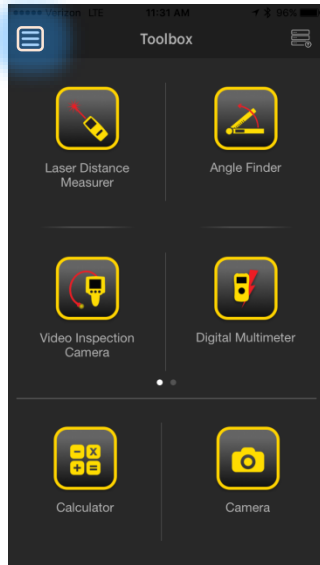
Tap image (top) or video (bottom) to view. Hit the Camera button at the bottom to bring up the live view.



View image

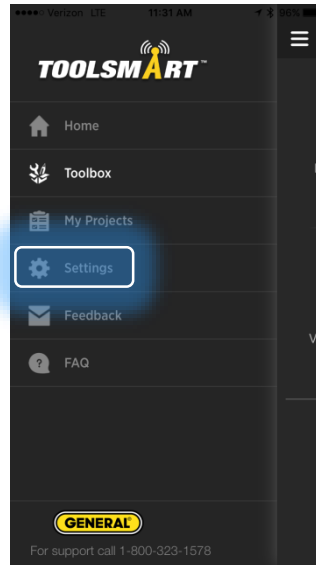


Play video



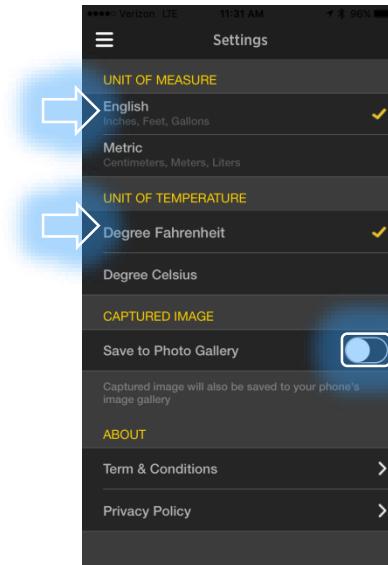
1

Click the Hamburger Menu (triple bar button) at the top left corner of the page.



2

Tap the settings button



3

From here, you can change the units of measurement (which applies to all tools), have the captured images save to the phone's gallery, and view the terms & conditions and privacy policy.